

Lingual Appliance

Julie was concerned about slight malalignment of her front teeth.

Treatment was complete after 6 months using the 2D Lingual appliance, without extractions.

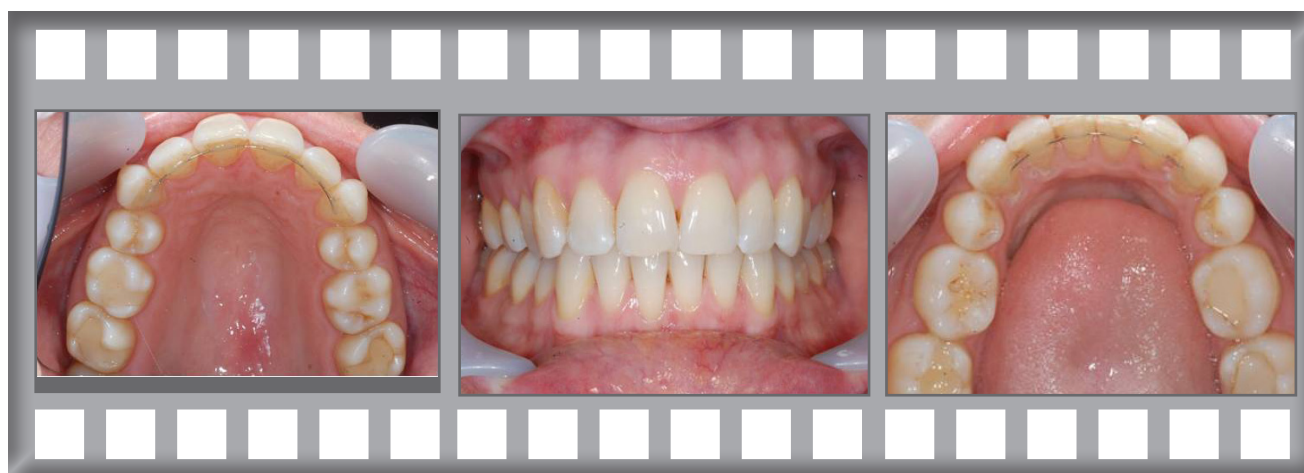


Laura

2D Lingual Case History



Before treatment.



Finished result after 6 months.



Before



After

Laura was delighted with her result.

This system is perfect for adult patients requiring minor tooth movement, who want a completely invisible brace.

Upper arch sequence



Lower arch sequence

