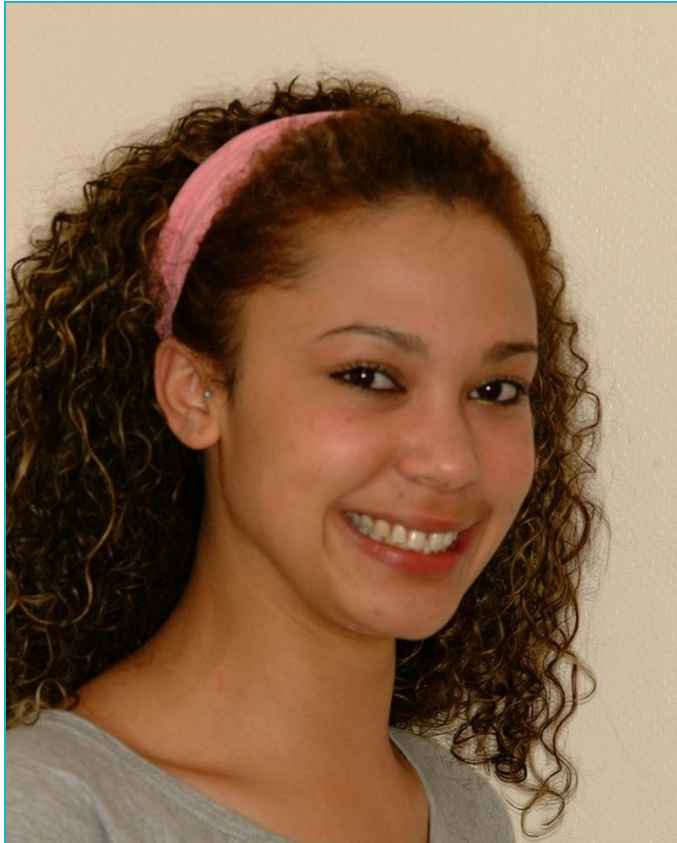




presents

Standard Fixed Brace



Ann presented at 17 years of age concerned about the spacing in her front teeth.



There was generalised upper and lower spacing.



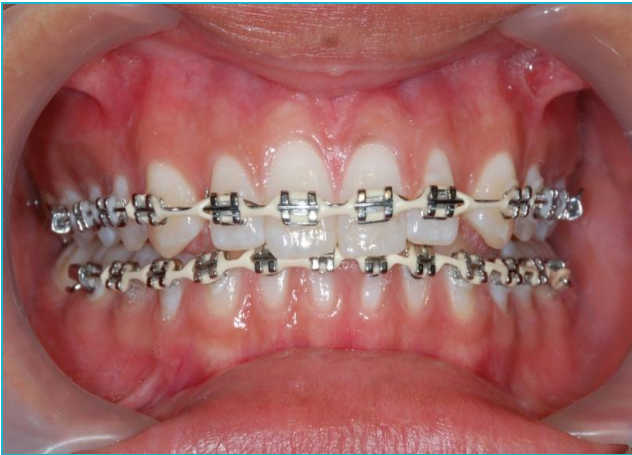
A fixed brace was used over a 12 month period to close the spaces.



1



2



3



4

Upper arch progress



1



2



3



4

Before



After



Before



After



Note the fixed retainer, which is essential

Before



After





The end result



Smile Created By



Confidence in your smile